

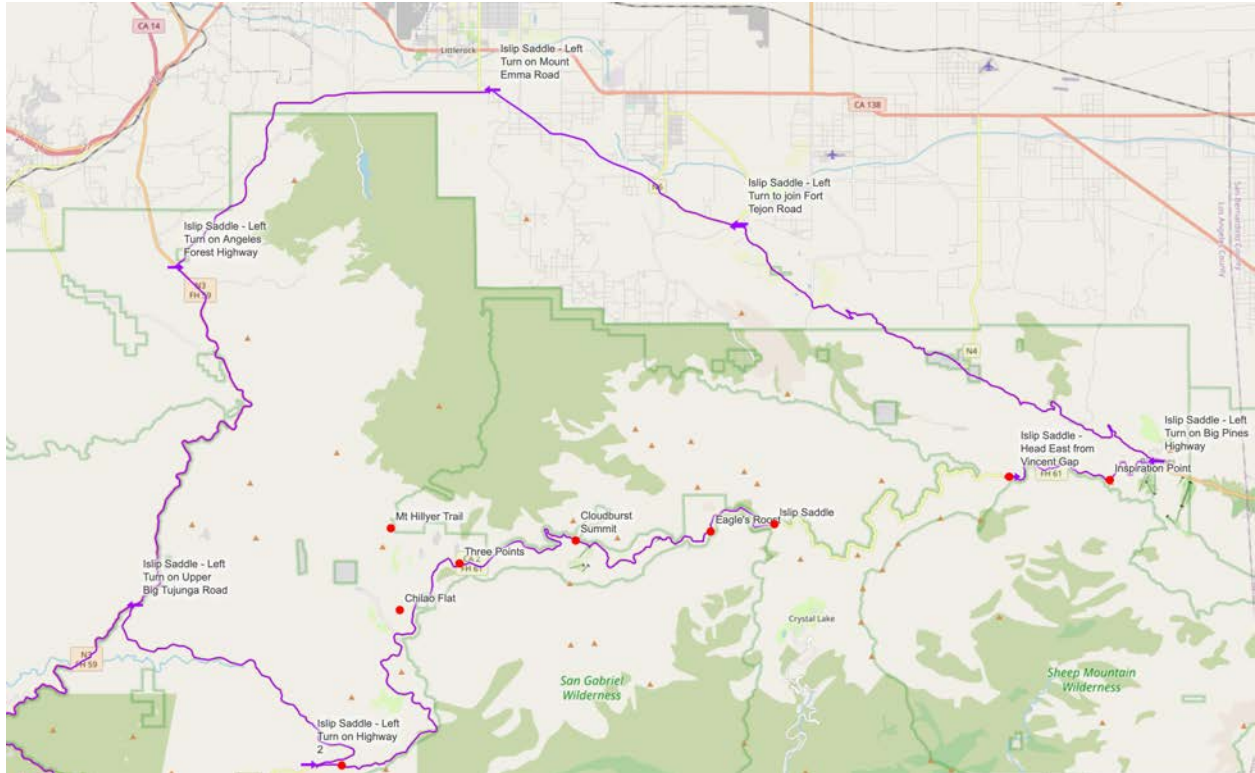


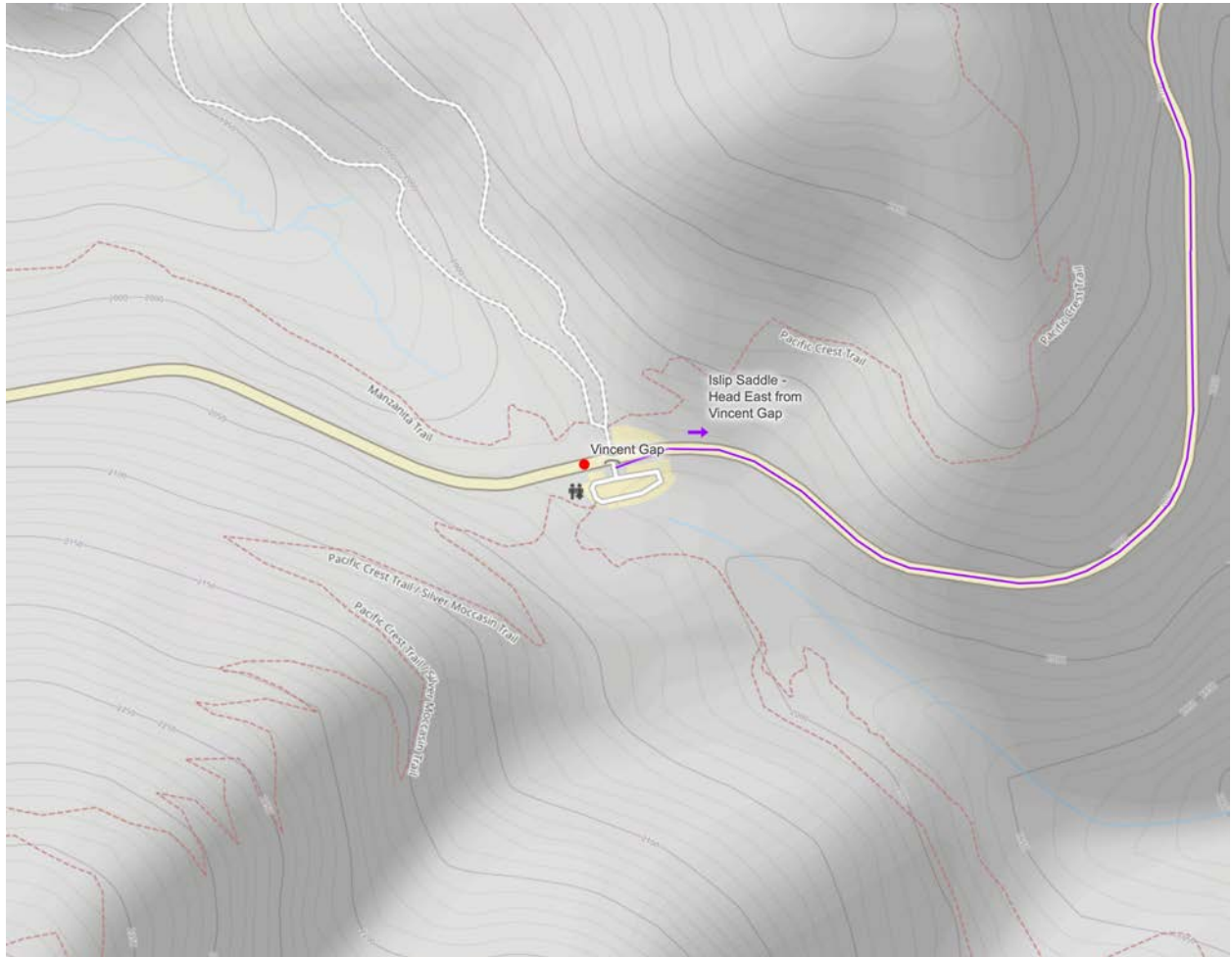
Vincent Gap to Islip Saddle Reroute Crew Guide

Includes Driving Instructions Between:

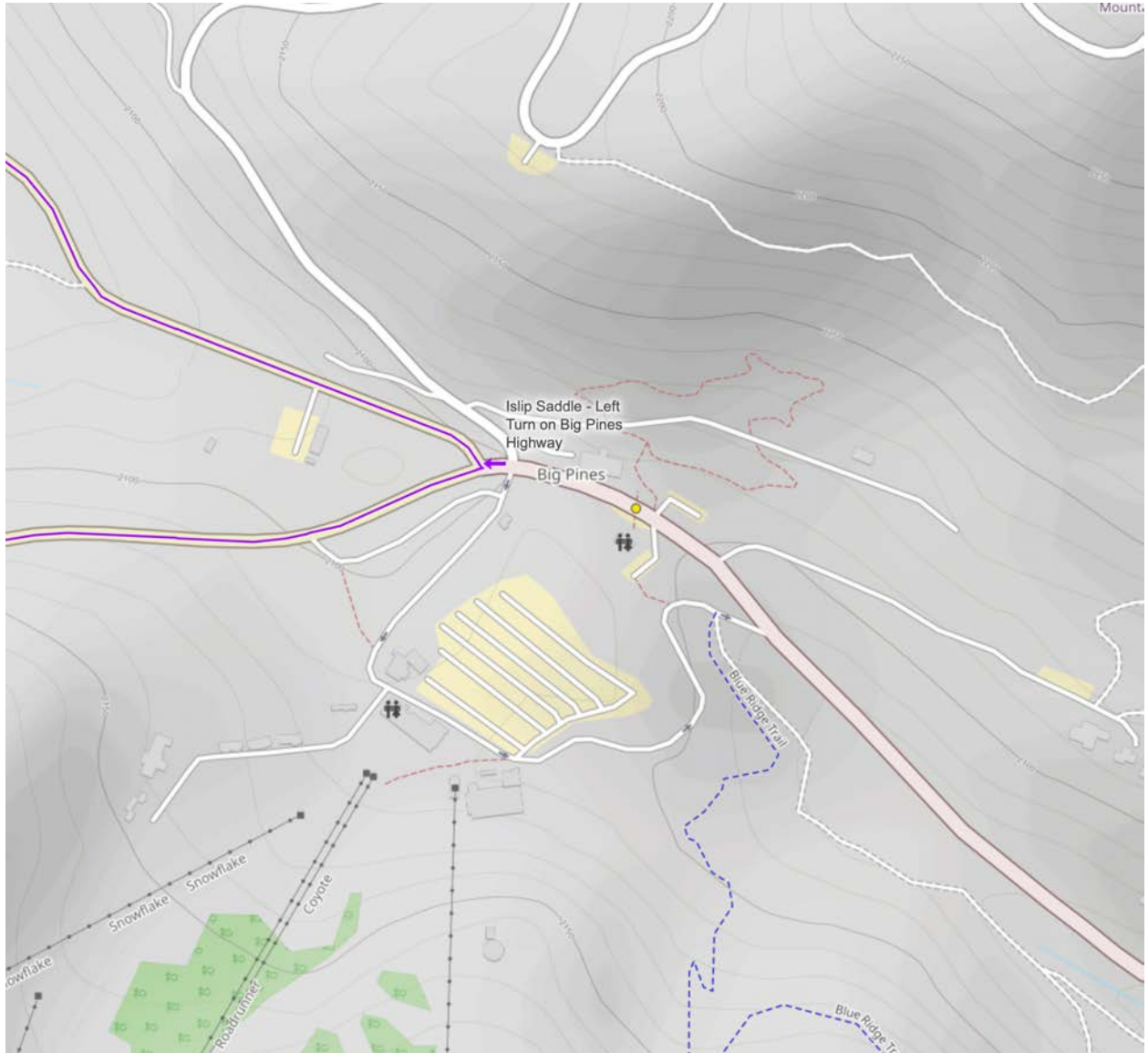
- Vincent Gap Aid Station and Islip Saddle Aid Station
- Shortcut Aid Station and the Finish Line
- La Canada Flintridge (I-210 ACH Exit) and Shortcut Aid Station

VINCENT GAP TO ISLIP SADDLE ROUTE OVERVIEW

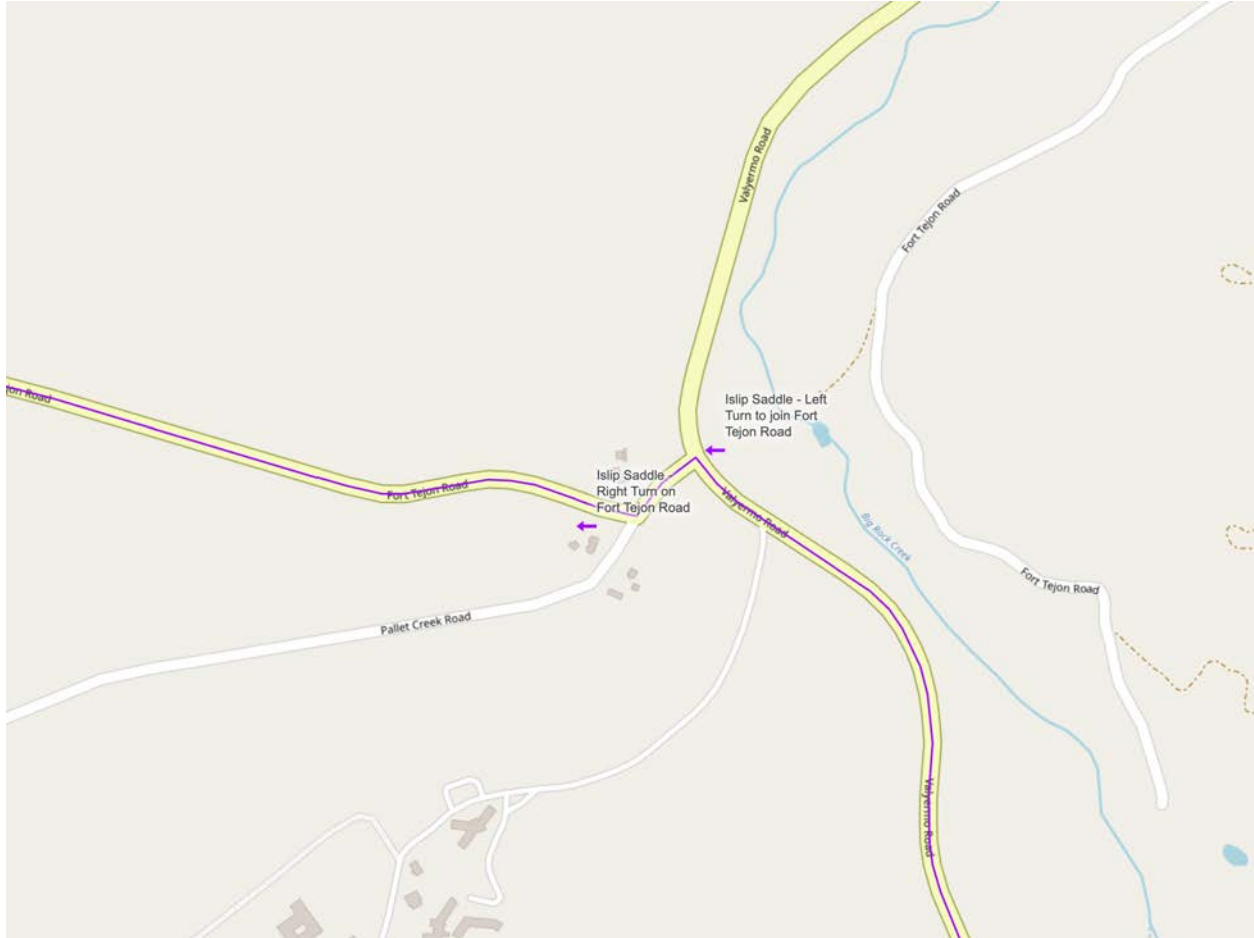




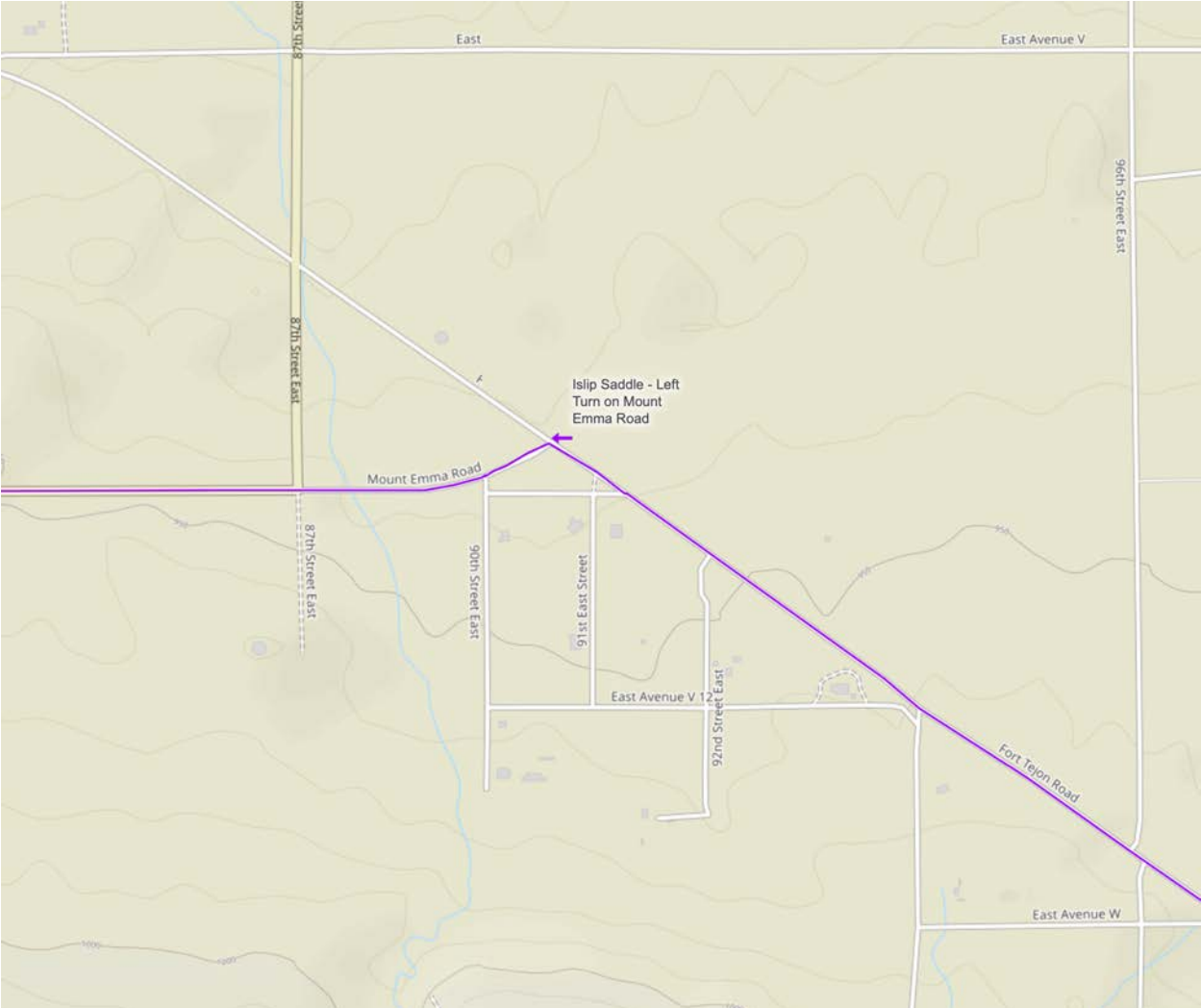
Leave Vincent Gap Aid Station heading east on Angeles Crest Highway, back toward Wrightwood.



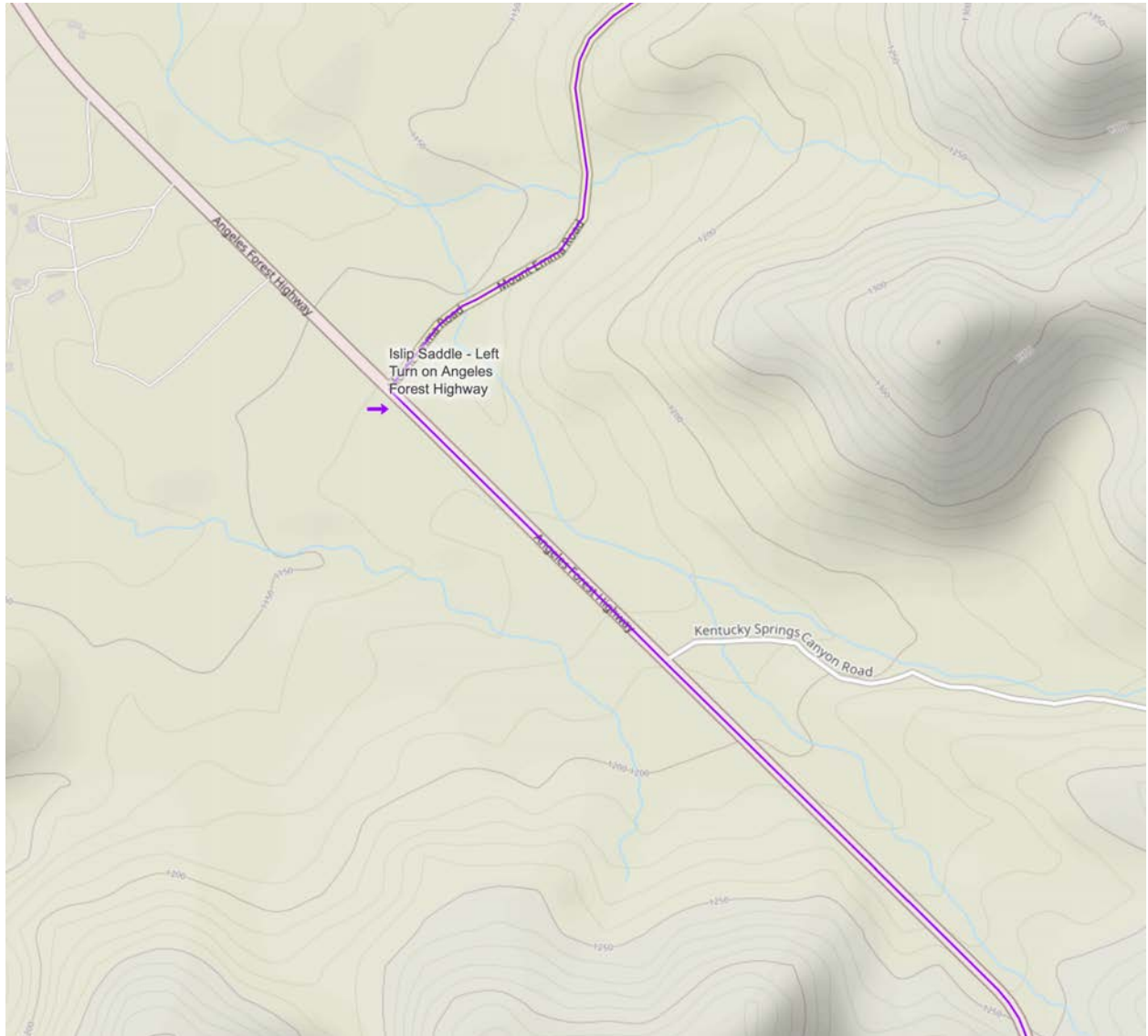
Turn LEFT at Big Pines Highway
Big Pines will change names to Valyermo Road shortly.



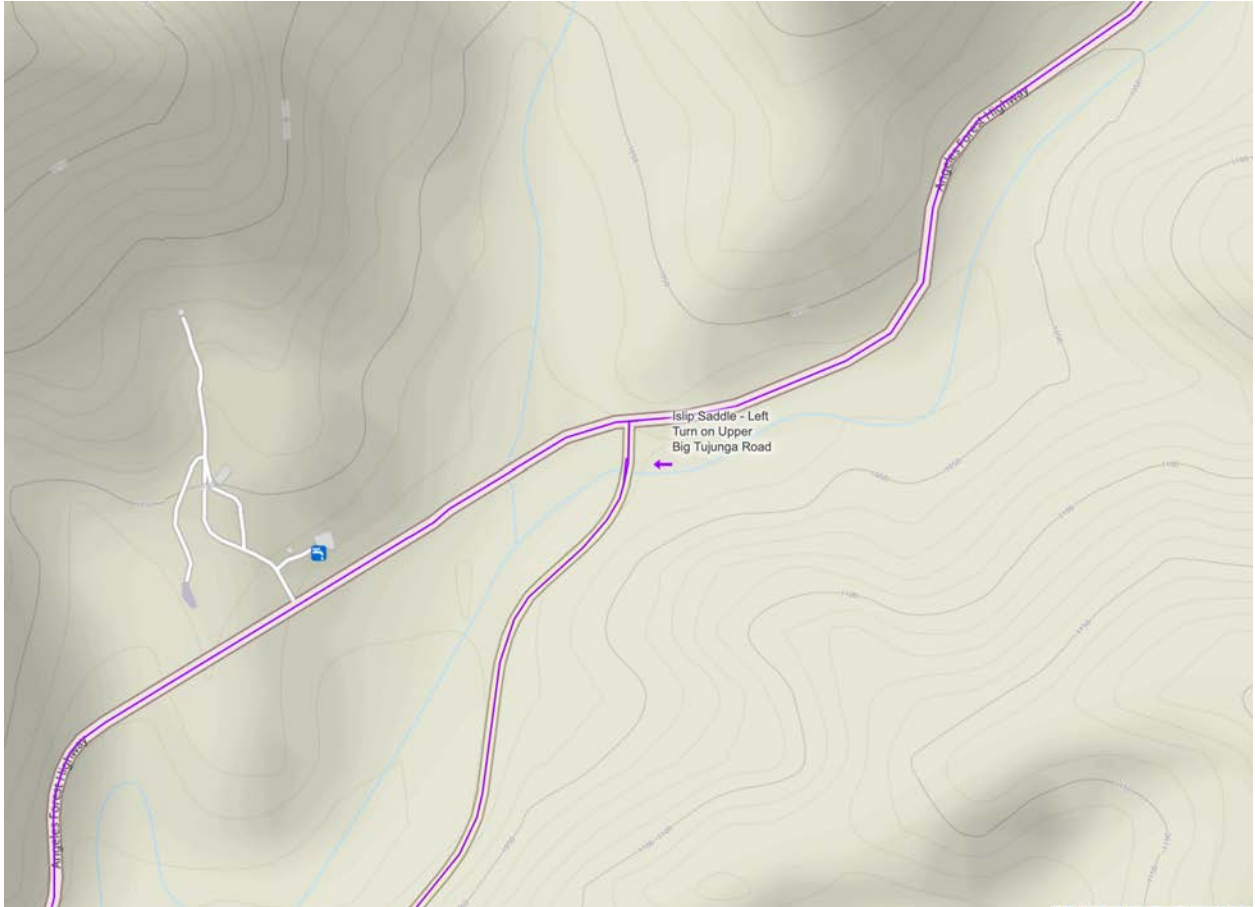
Turn LEFT from Valyermo Road to Fort Tejon Road
Followed by a quick RIGHT turn to follow Fort Tejon Road.



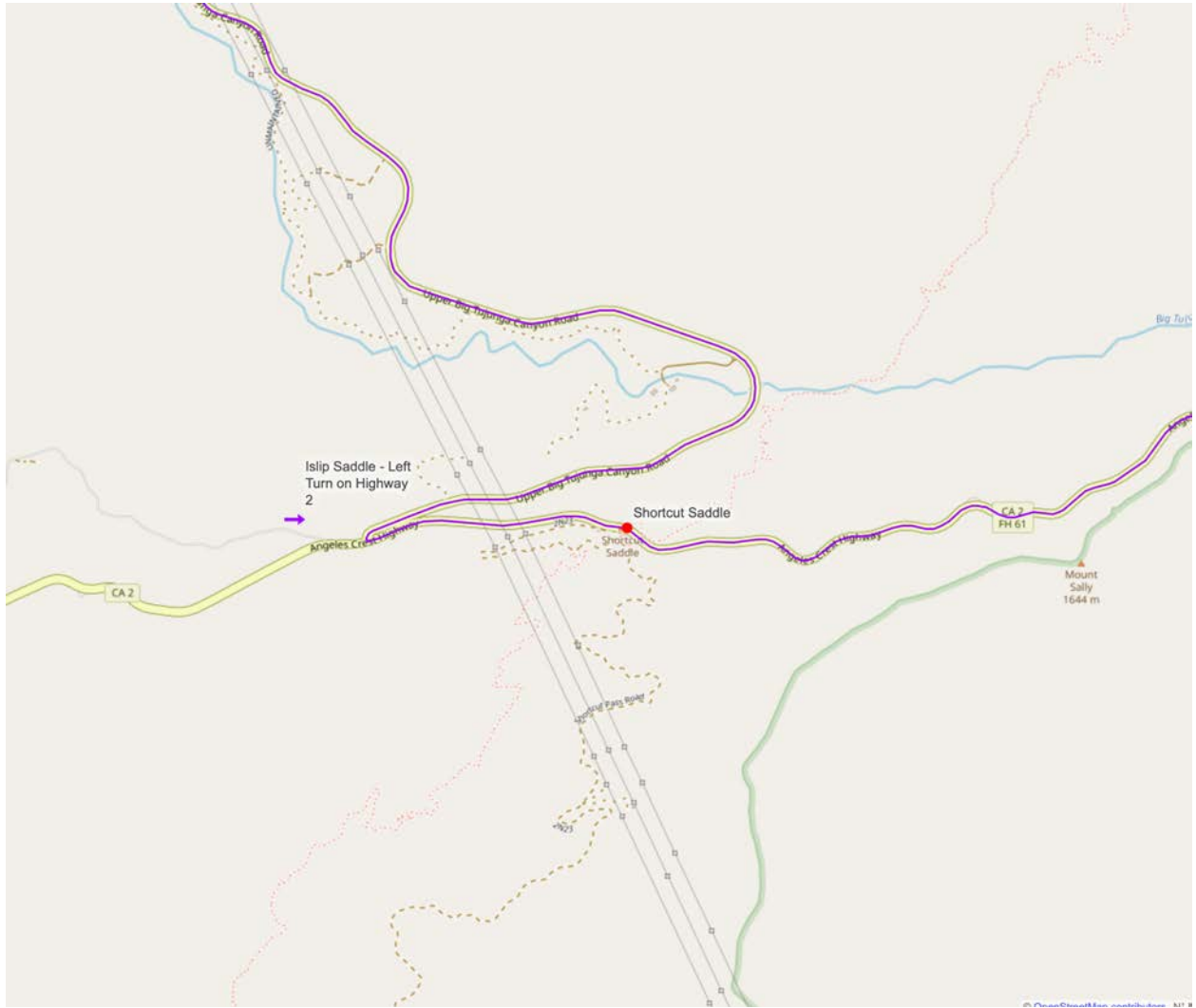
LEFT turn to Mount Emma Road



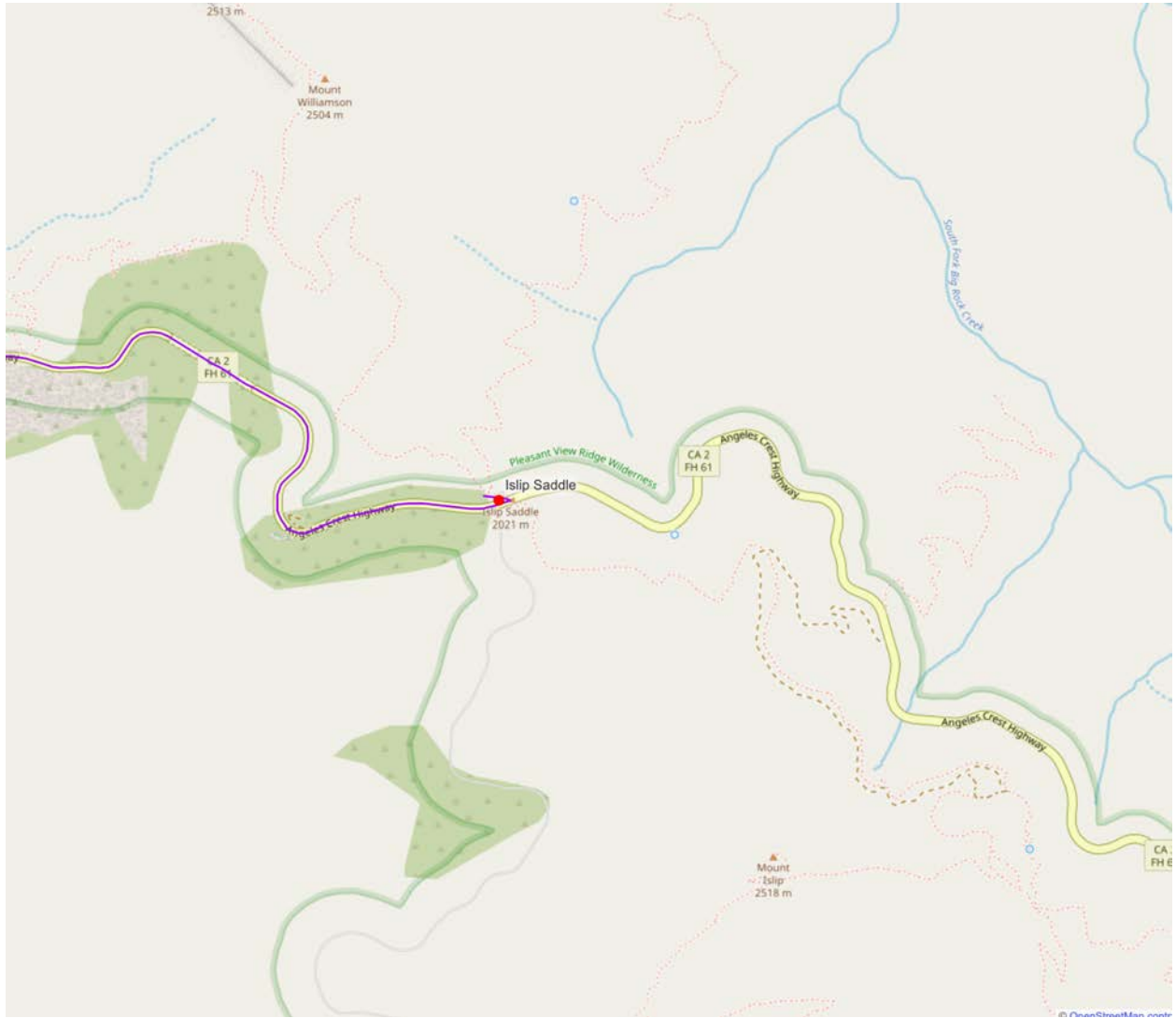
LEFT turn on Angeles Forest Highway



LEFT turn on Upper Big Tujunga Road



LEFT turn on to Angeles Crest Highway

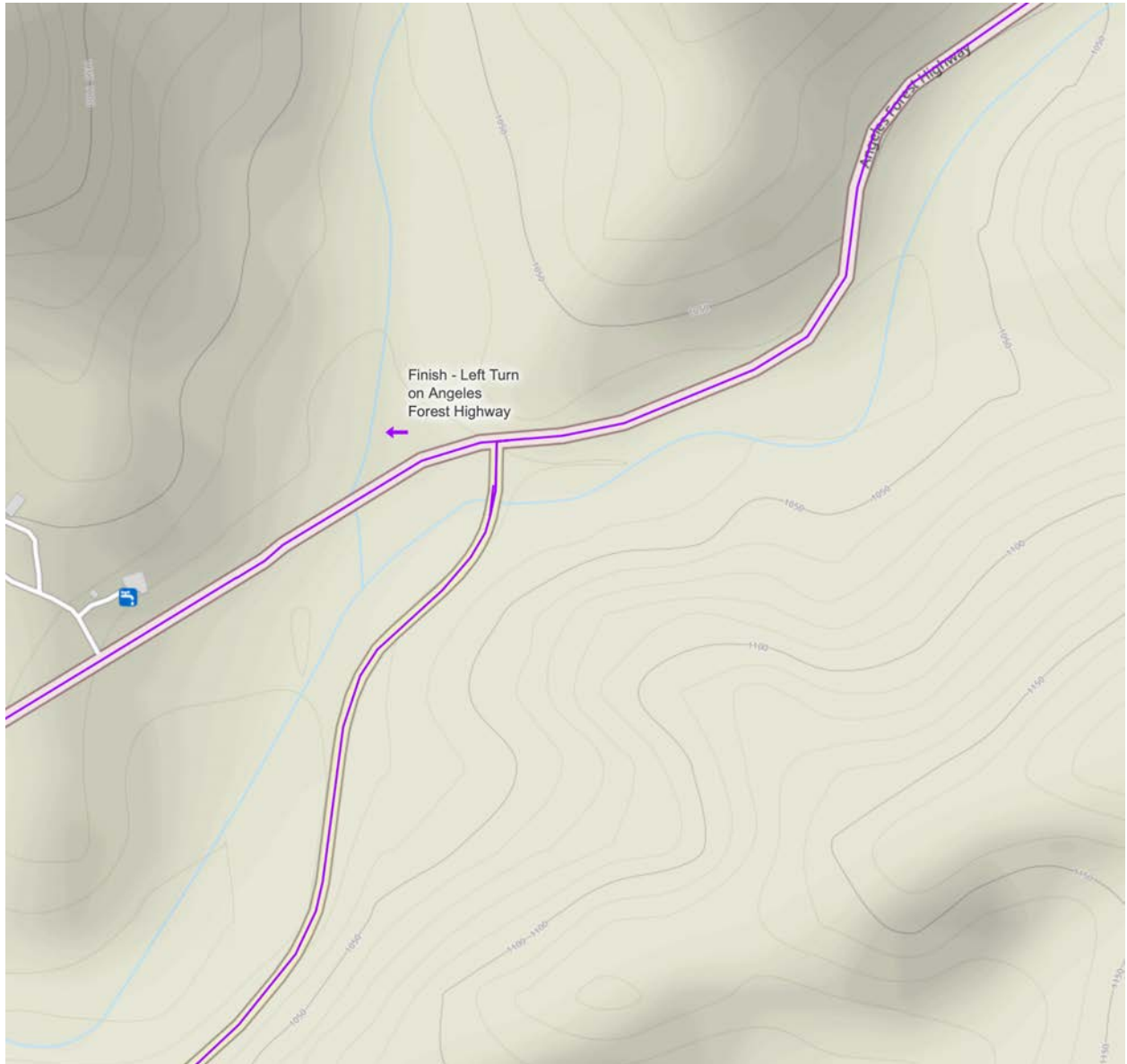


Arrive at Islip Saddle Aid Station

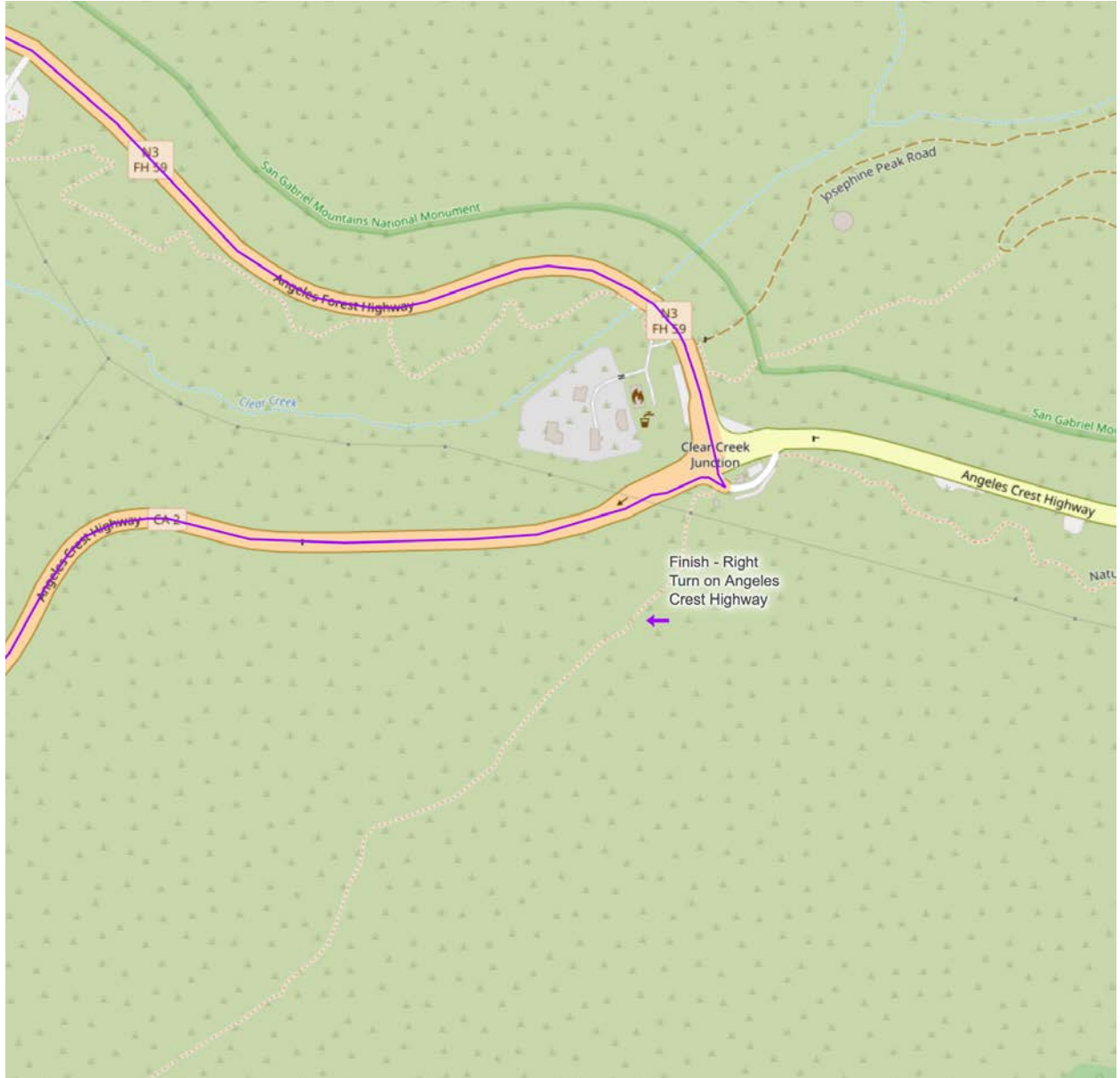
TO FINISH FROM SHORTCUT SADDLE



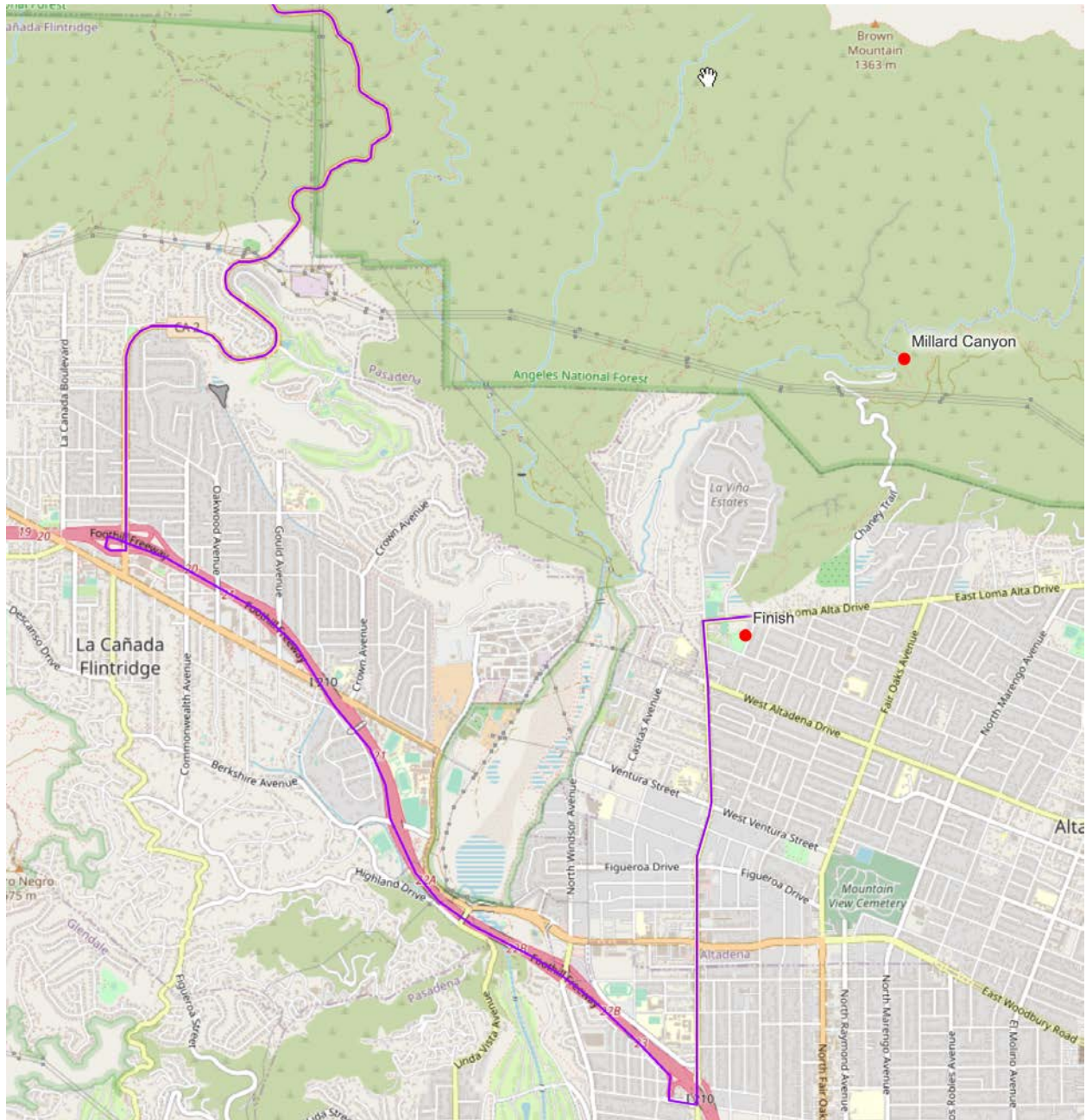
Leave Shortcut Saddle Aid Station by heading West on Angeles Crest Highway
RIGHT turn on Upper Big Tujunga Road



LEFT turn on to Angeles Forest Highway



RIGHT turn on Angeles Crest Highway.



Follow Angeles Crest Highway toward La Canada

Take I210 EAST entrance on the right side.

Exit on Lincoln Boulevard

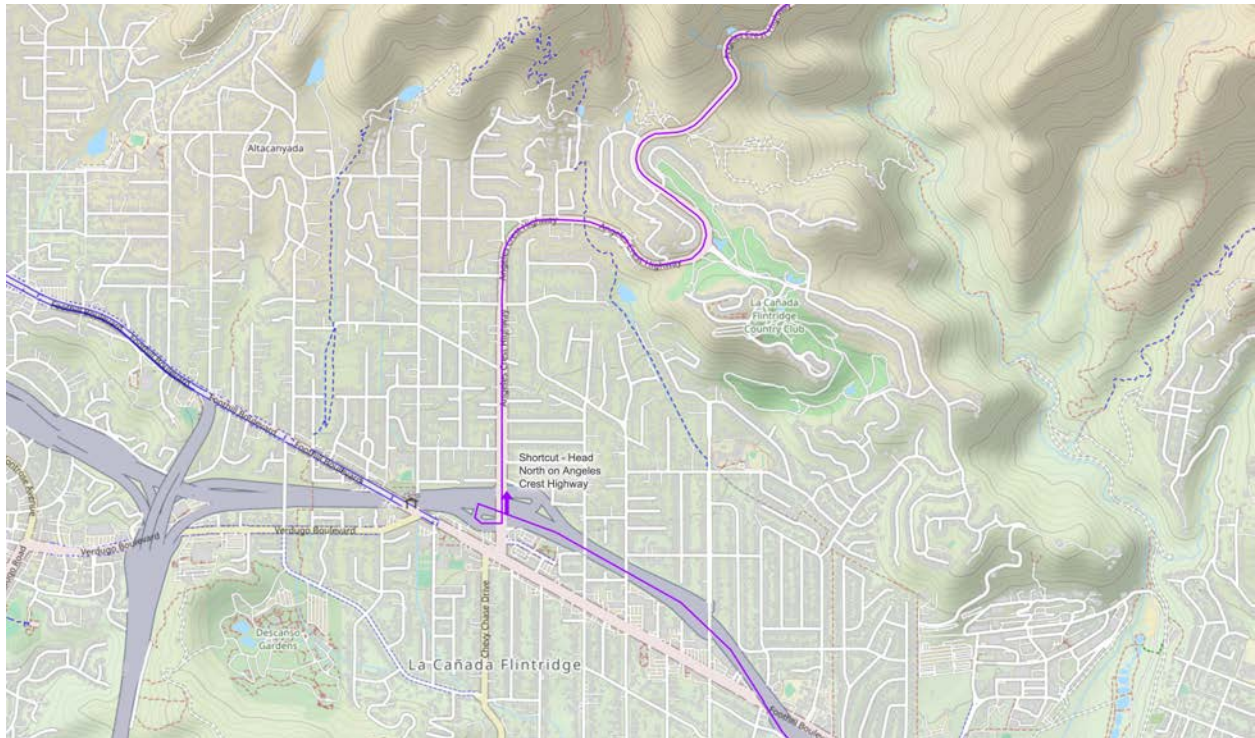
LEFT off the ramp

LEFT on Lincoln Boulevard

Follow until Loma Alta Drive and find legal parking on the street.

Please use caution as runners are running along and crossing Lincoln Boulevard.

Shortcut Saddle Aid Station From The I-210 Angeles Crest Highway Exit

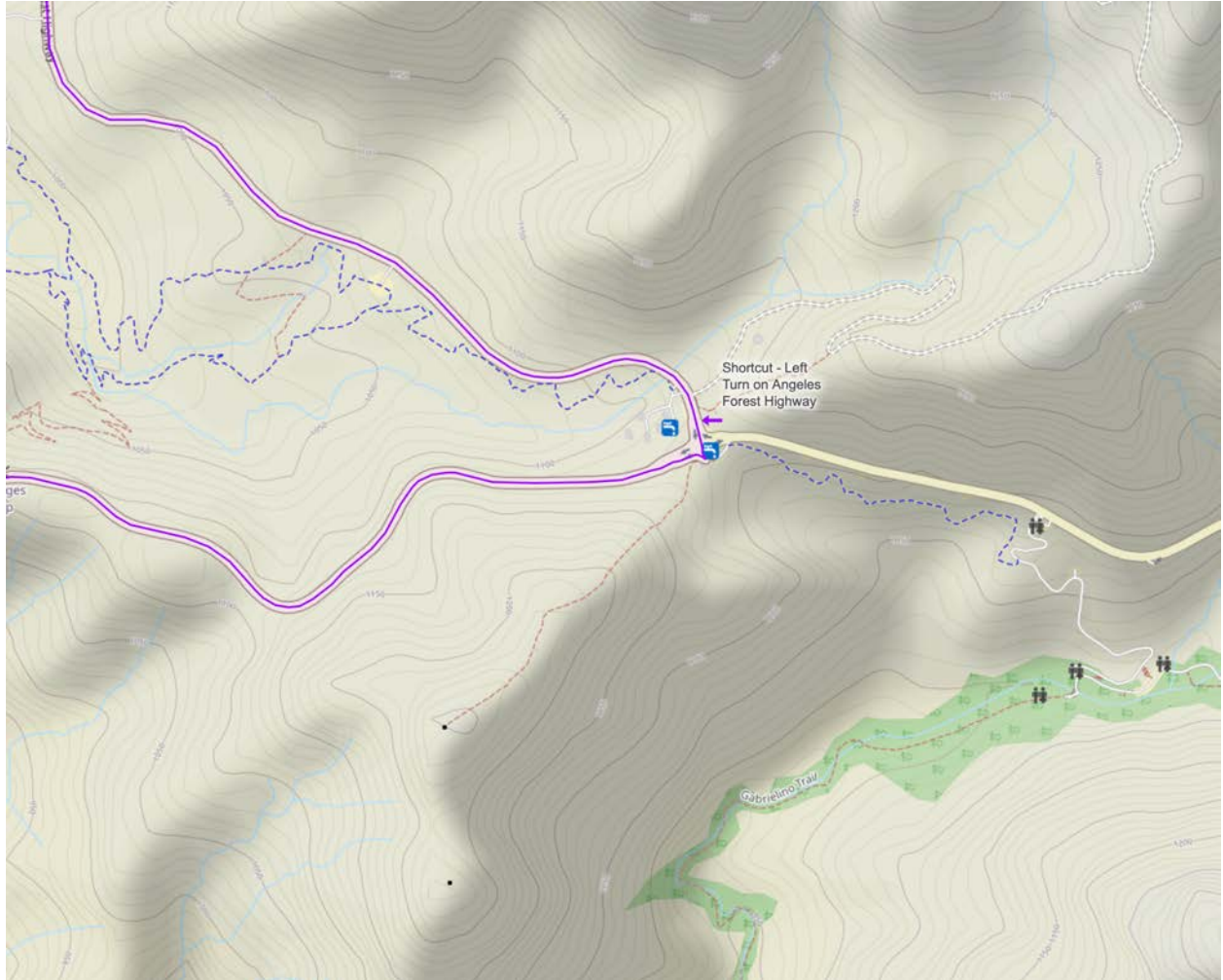


Head NORTH on Angeles Crest Highway from Interstate 210.

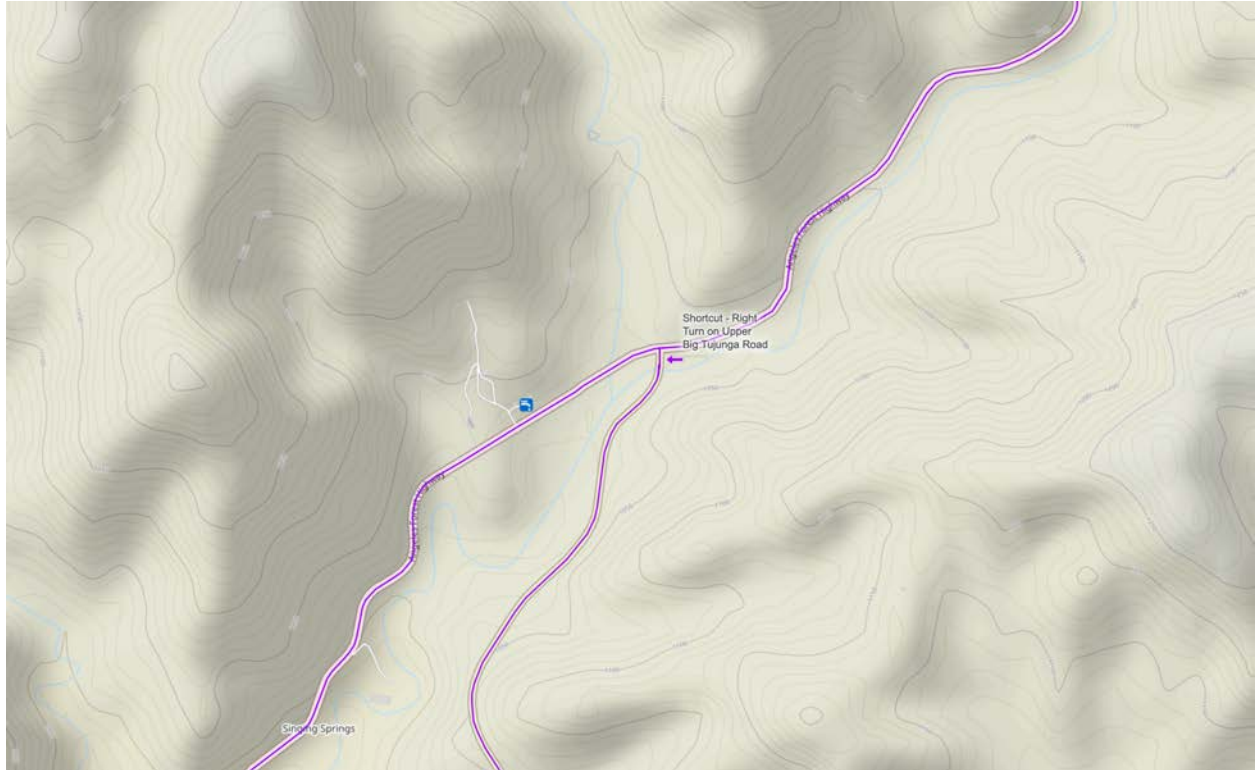
If you are traveling on the westbound side, this will be a RIGHT turn on ACH.

If you are traveling on the eastbound side, this will be a LEFT turn on ACH.

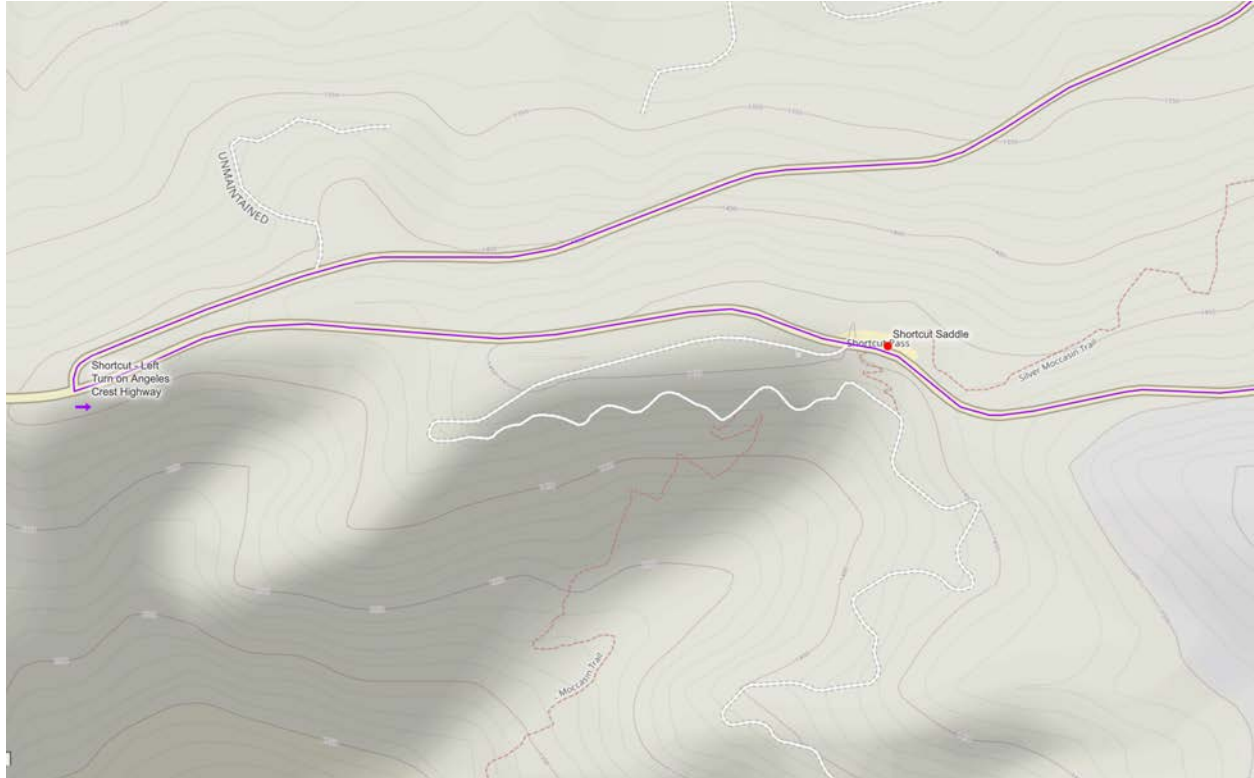
PRO TIP: The two gas stations and La Canada Towne Center shopping center will be your last chance for food, gas, and an Adventure Pass.



LEFT turn on Angeles Forest Highway



RIGHT turn on Big Tujunga Road



LEFT turn on Angeles Crest Highway.

The Shortcut Aid Station is located approximately .6 miles on your left side.

USE CAUTION: Runners will be crossing Angeles Crest Highway at this aid station.

